



## Highlights on some regional “hot topics” - Equity, employment and social issues including SCP



Magali OUTTERS – Teamleader SWITCH-Med Policy Component at CP/RAC (UNEP/MAP)  
Expert group meeting for the Global Sustainable Development Report – Dubronik – 21-22 October 2013



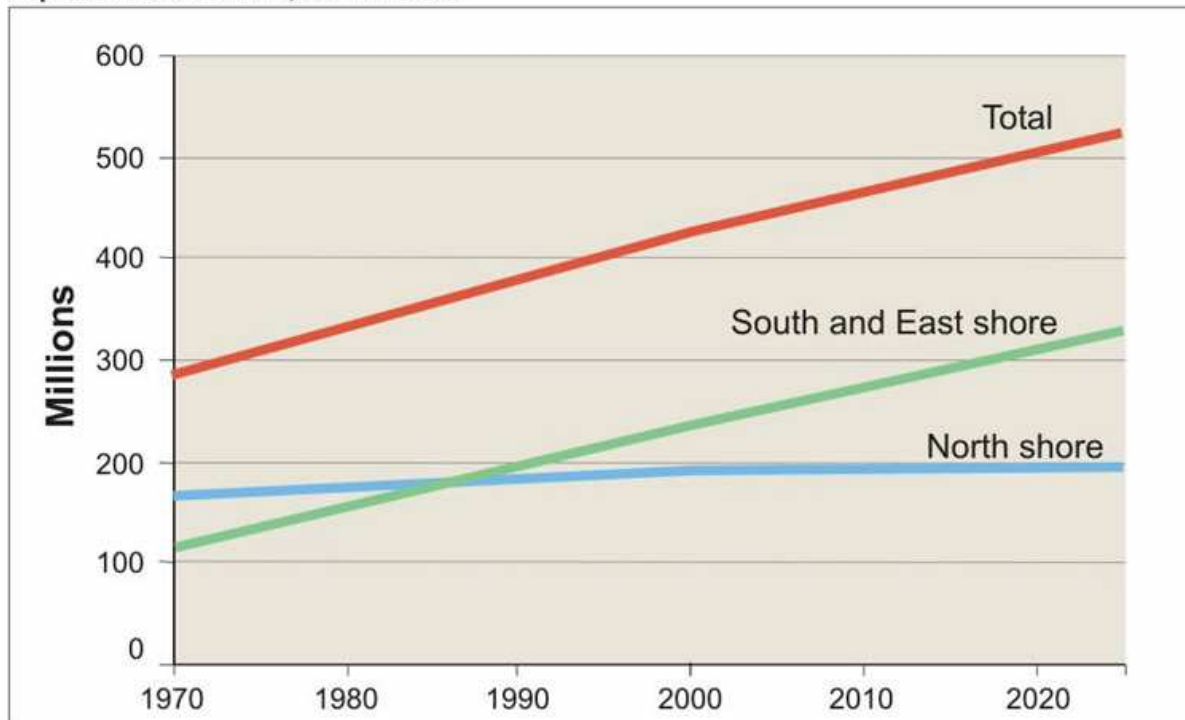
Regional Activity Centre  
for Cleaner Production



switchmed



Population of countries, N1 1970-2025



Source : Plan Bleu, Courbage

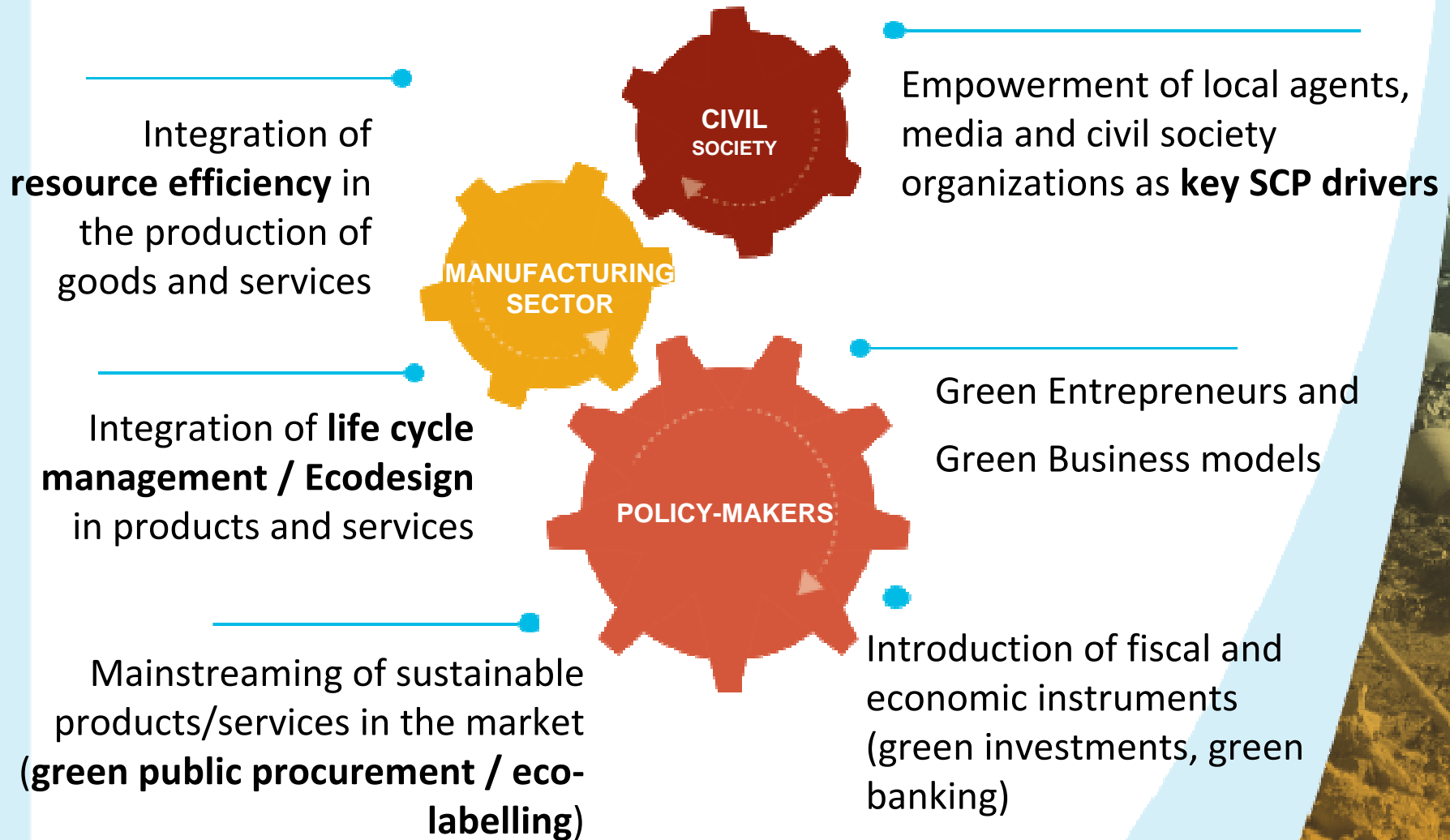
**South/east shores**

- Demographic explosion
- Young population (30% under 15)

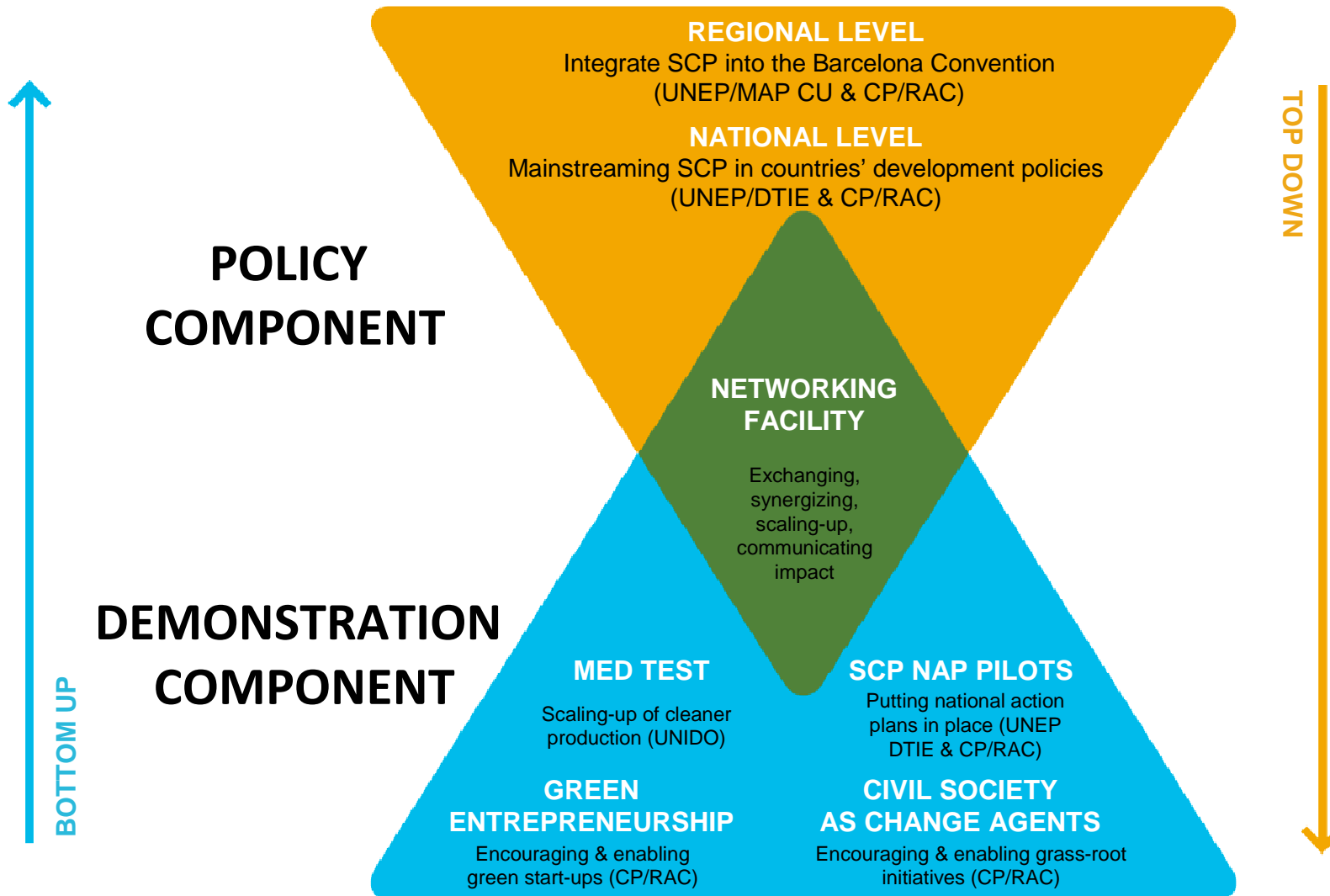
**North shore**

- Population getting older

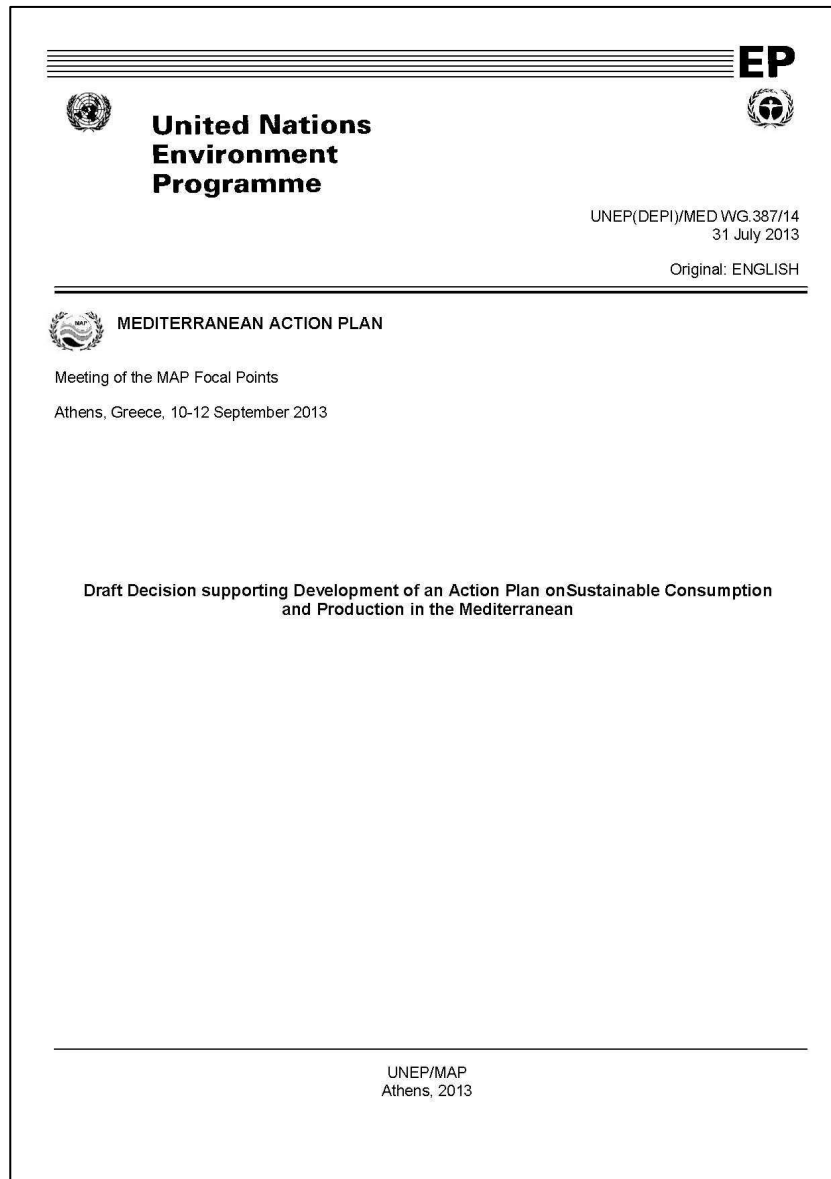
## SCP, an integrated approach to address the drivers of pollution and degradation



# SWITCH-Med structure



# SWITCH-Med Regional Policy component



## SCP Action Plan for the Mediterranean including the corresponding Roadmap

addressing the Region's common priorities for environment protection and sustainable development.

*First draft presented at MCSD and CP/RAC Focal Point Meeting in June 2013*

## SCP knowledge online platform

to facilitate a broad participatory process for the legitimacy of a SCP Action Plan and Roadmap for the Mediterranean.

*Go live of the website planned for December 2013*

## Toolkit for policy-makers

on how to mainstream SCP into existing development policies, illustrated a number of case studies.

*It will be published by the end of November 2013*

## SWITCH-Med national policy component

Objective: Mainstreaming SCP into national development policies (9 beneficiary countries)

- Scoping missions to identify SCP related existing processes in the countries;

